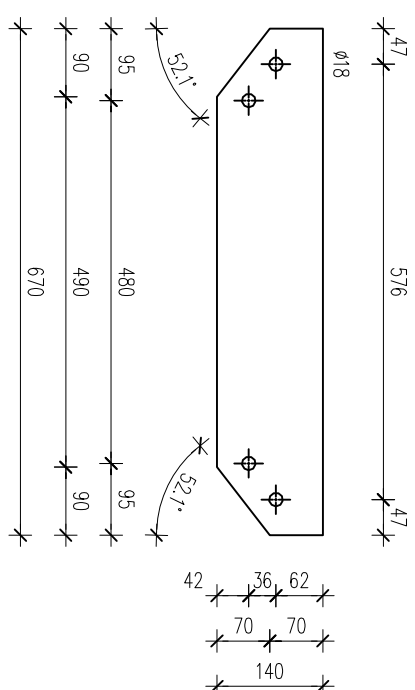
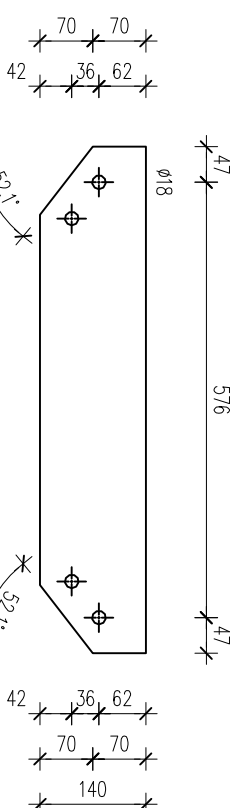
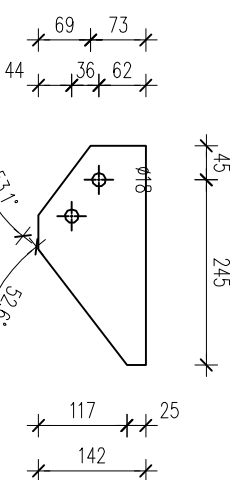
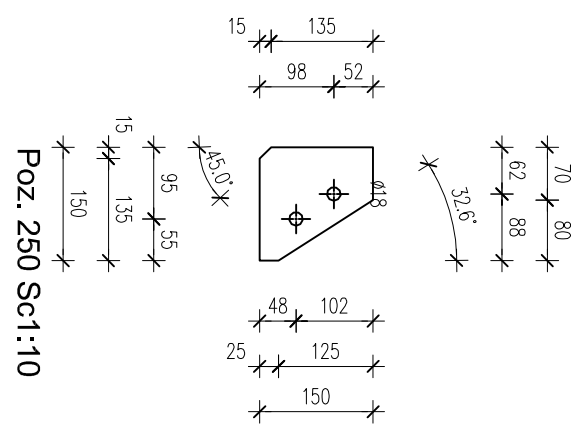


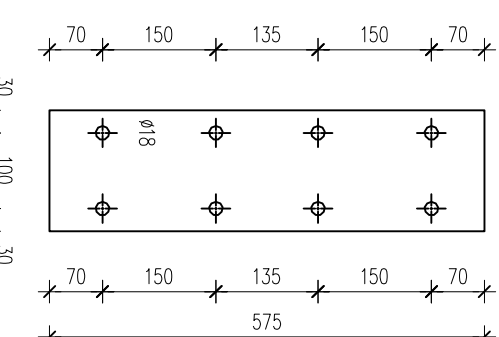
MARKA – ELEMENTY I

1:10



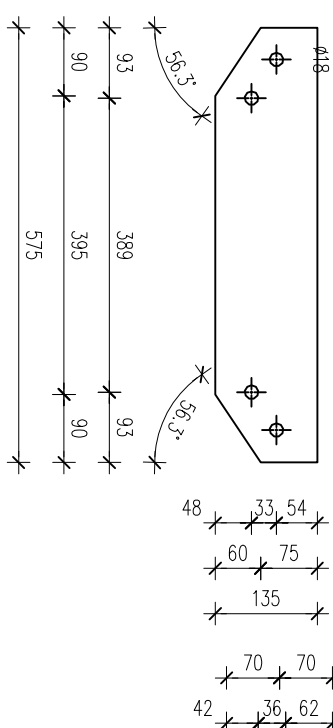
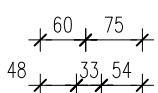
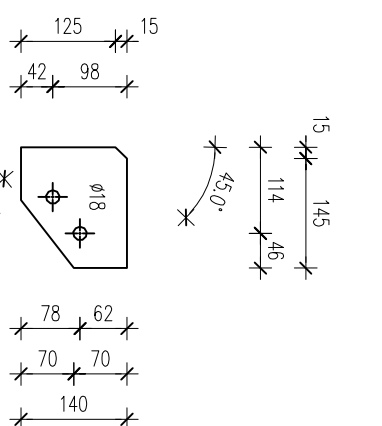
Poz. 256 Sc1:10

BL. 10x140x670 (2 x)



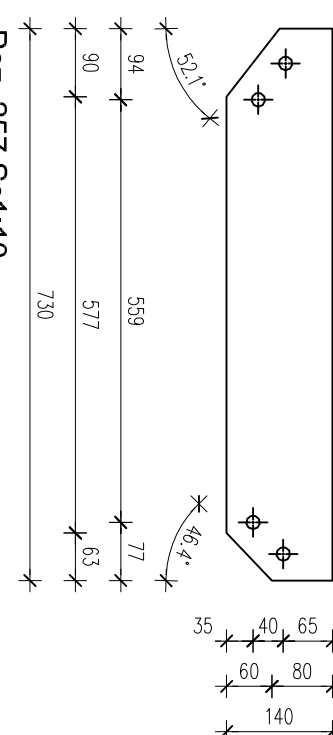
Poz. 263 Sc1:10

BL. 12x160x575 (2 x)



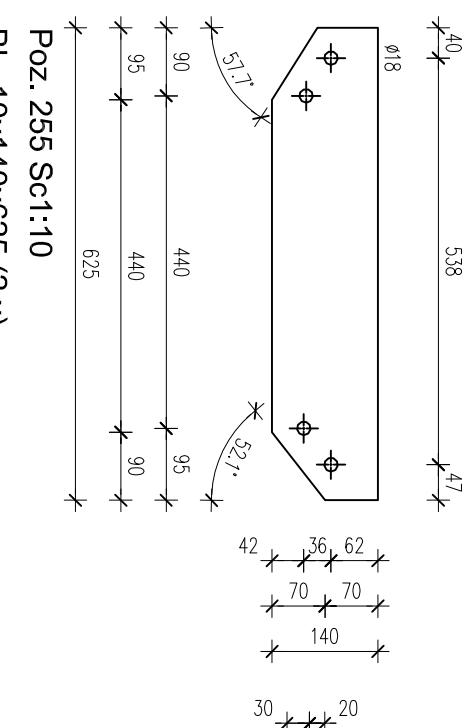
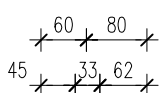
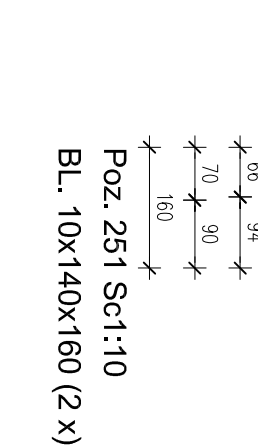
Poz. 254 Sc1:10

BL. 10x135x575 (2 x)



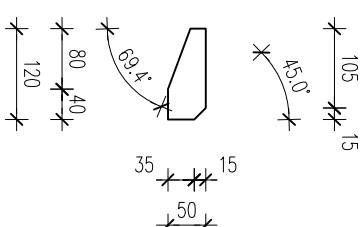
Poz. 257 Sc1:10

BL. 10x140x730 (2 x)



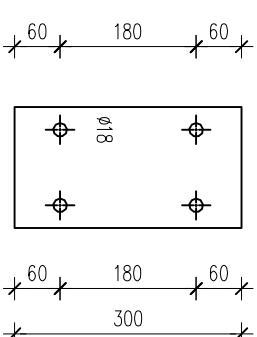
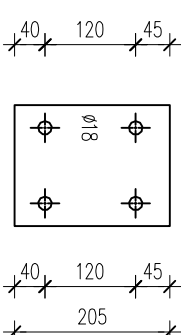
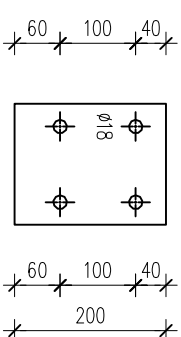
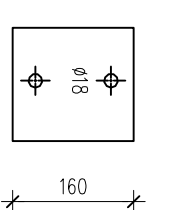
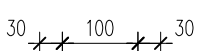
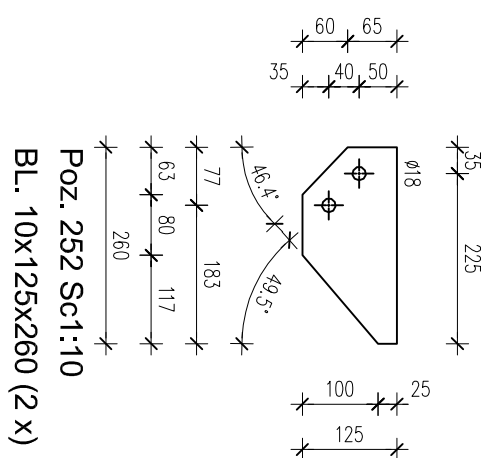
Poz. 255 Sc1:10


BL. 10x140x625 (2 x)



Poz. 258 Sc1:10

BL. 10x50x120 (48 x)



	
"ATM" Krzysztof Mikoszewicz – usługi budowlane ul. Skłodowska 12 lok. 107, 15–399 Białystok tel. 85 742 40 08 wew.20, atmprojekty@interia.pl	
projekt: ZESPÓŁ BUDYNKÓW DO PRZEPROWADZANIA KONTROLI FITOSANITARNEJ	
DZIAŁKA NR GEOD. 271/6 W KUŹNICY	
branża:	KONSTRUKCJA
data:	12.08.2021
nr rys.	rysunek:
KS-46	MARKA – ELEMENTY I
opracował:	nr uprawnień:
mgr inż. M. Maliszewski	PdL/0008/PWbkb/17
sprawdził:	nr uprawnień:
mgr inż. H. Maliszewska	Bt 16/81
współpraca:	nr uprawnień:
	podpis: